

LIGHT CONTROLLER

LC 200

Manual and User Guide

Please read this manual before operating this product



PSI, spol. s r. o., Drásov 470, 664 24 Drásov, Czech Republic
FAX: +420 511 440 901, TEL: +420 511 440 011, www.psi.cz

© PSI (Photon Systems Instruments), spol. s r. o. (hereinafter PSI), 2016

This document and its parts can be copied or provided to a third party only with the express permission of PSI.

The contents of this manual have been verified to correspond to the specifications of the device. However, deviations cannot be ruled out. Therefore, a complete correspondence between the manual and the real device cannot be guaranteed. The information in this manual is regularly checked, and corrections may be made in subsequent versions.

The visualizations shown in this manual are only illustrative.

This manual is an integral part of the purchase and delivery of equipment and its accessories and both Parties must abide by it.

1. Table of Contents

1.	TABLE OF CONTENTS	3
2.	LIST OF EQUIPMENT	4
3.	SAFETY PRECAUTIONS	5
4.	DEVICE DESCRIPTION.....	6
5.	DEVICE OPERATION	7
6.	L485 MODE.....	15
7.	STATEMENT OF LIMITED WARRANTY	17

2. List of Equipment

Carefully unpack the carton, which contains:

- **Light Controller LC 200**
- **Communication Cable**
- **This Operation Manual** (*on a CD or a printed version*)
- **Optional Accessories** (*according to your specific order*)

Note:

If any item is missing, please contact the manufacturer. Also check the carton for any visible external damage. If you find any damage, notify the carrier and the manufacturer immediately. In this case, the carton and all packing materials should be retained for inspection by the carrier or insurer.

For customer support, please write to: support@psi.cz

3. Safety Precautions

- **LIGHT CONTROLLER LC 200 IS DESIGNED FOR CONTROL OF THE PSI LED FYTO-PANELS. DO NOT USE IT WITH ANY OTHER DEVICE!**
- **WHEN CONNECTING THE INSTRUMENT MODULES, USE ONLY THE CABLES SUPPLIED BY THE MANUFACTURER!**
- **KEEP THE INSTRUMENT DRY AND AVOID WORKING IN HIGH HUMIDITY ENVIRONMENT!**
- **THE MANUFACTURER IS NOT RESPONSIBLE FOR ANY DAMAGE DUE TO IMPROPER OR INCOMPETENT OPERATION!!!**

GENERAL ELECTRICAL SAFETY GUIDELINES:

- Routinely check the devices and their wiring.
- Replace worn or damaged cords immediately.
- Use electrical extension cords wisely and do not overload them.
- Place the devices on a flat and firm surface. Keep them away from wet floors and counters.
- Avoid touching the device, socket outlet or switch if your hands are wet.
- Do not perform any alterations to the electrical part of the devices or their components.

4. Device Description

FRONT PANEL:

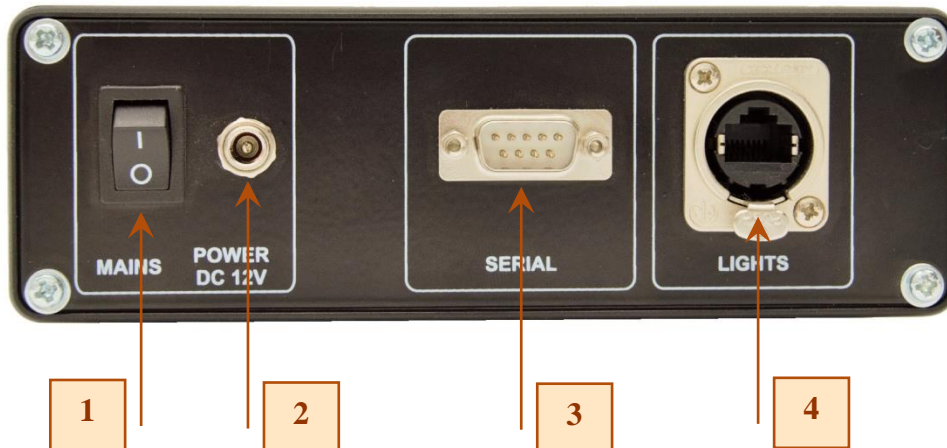


[1] – Four LED indicators: on if the corresponding light is connected.

[2] – Two-line display.

[3] – Four control keys.

REAR PANEL:



[1] – ON/OFF mains switch.

[2] – Power connector.

[3] – Service connector.

[4] – Light panel connector. The Light Controller automatically detects the connected LED Light Source(s). Each light /color can be configured and controlled independently

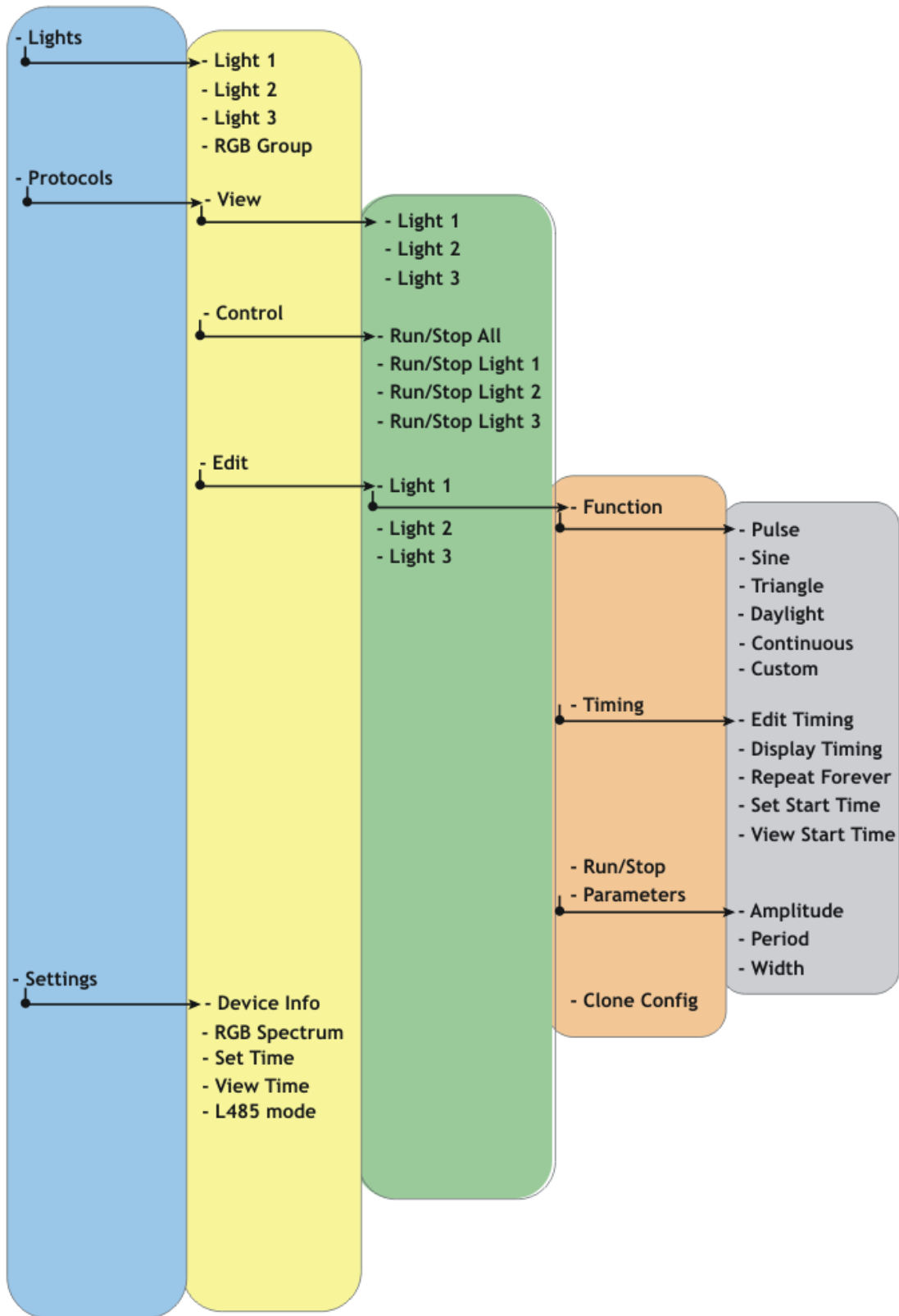
5. Device Operation

Light Controller LC 200 supports up to eight different channels i.e. it allows up to eight different protocols. Each light source can be configured and calibrated separately using their own written reports

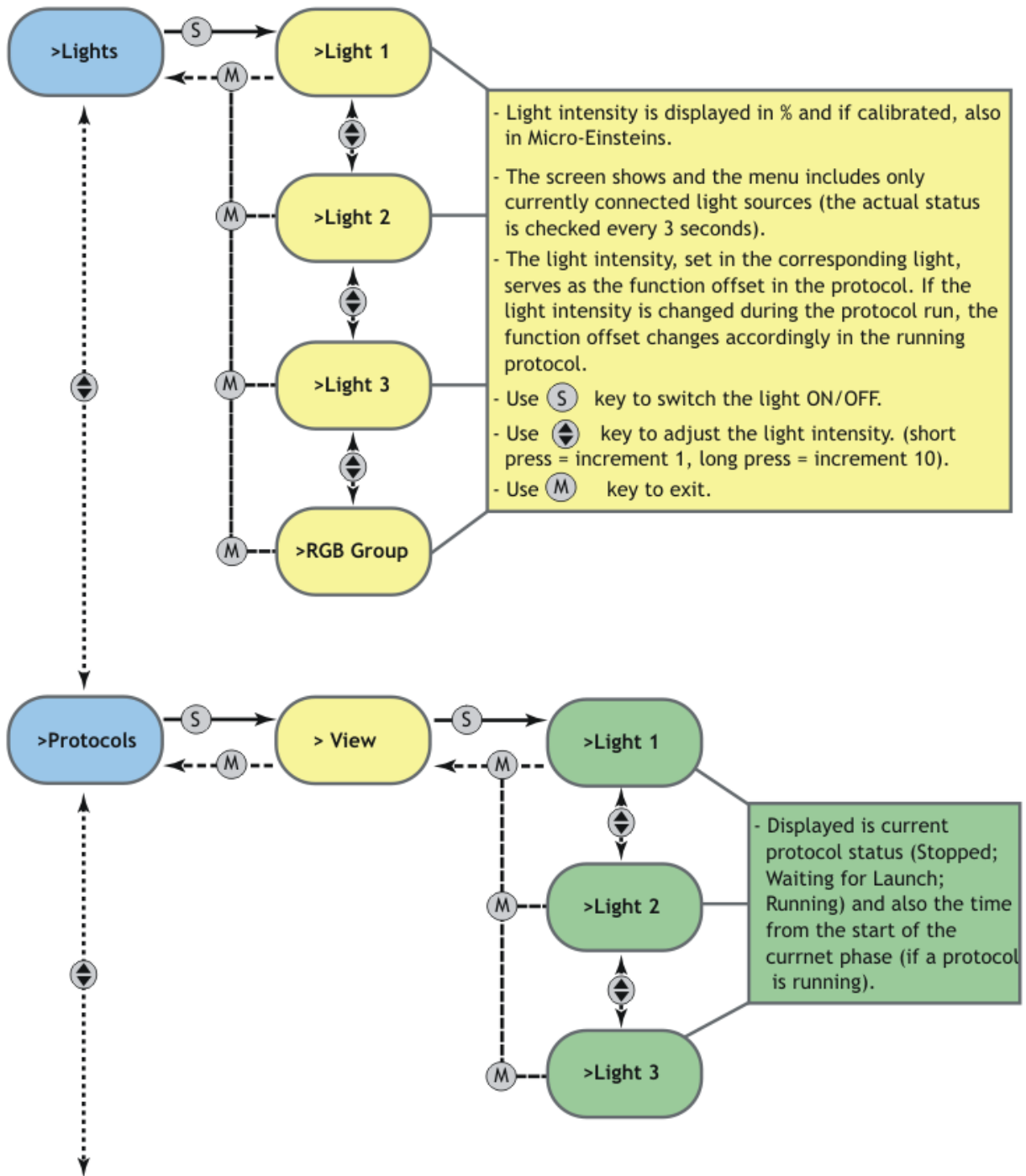
For light control and protocol writing, use the following four keys located on the front panel:

- [M]:** To move back in the menu tree or to exit the menu.
- [S]:** To move forward in the menu tree or to save your selection.
- [↑]:** To move up in the menu or to add value.
- [↓]:** To move down in the menu or to subtract value.

Menu Tree - Main



Menu Lights + Menu Protocols



Menu Protocols - Control + Edit

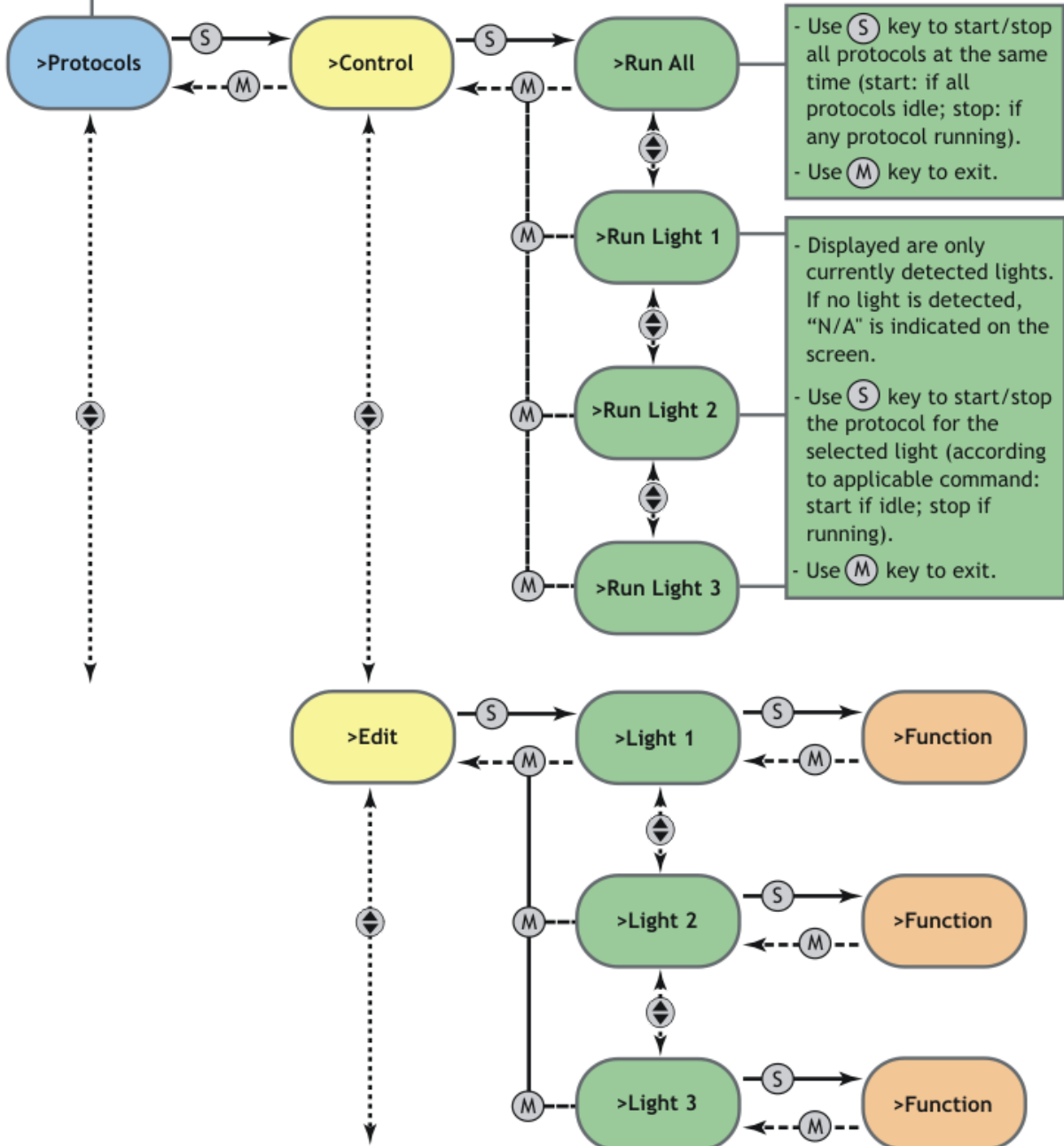
EACH PROTOCOL CONSISTS OF THREE INDEPENDENTLY CONFIGURABLE PHASES:

- 1) Light Period (LP) = Time period during which the defined function is performed.
- 2) Dark Period (DP) = Time period during which the light is off.
- 3) Repeats = Number of repeats for the phase.

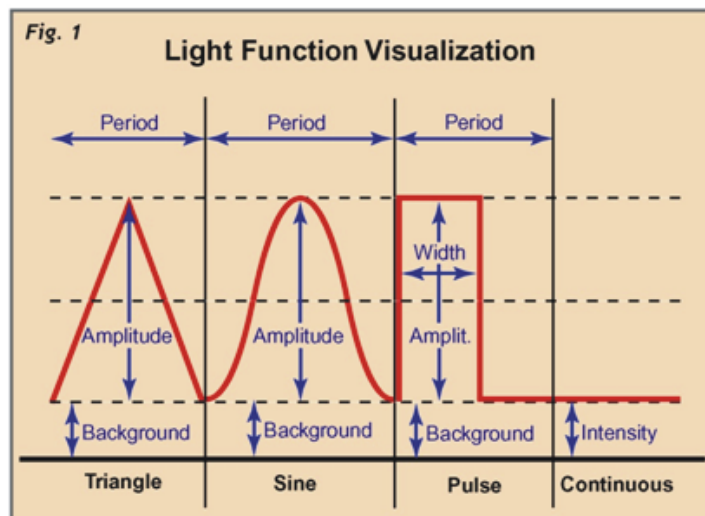
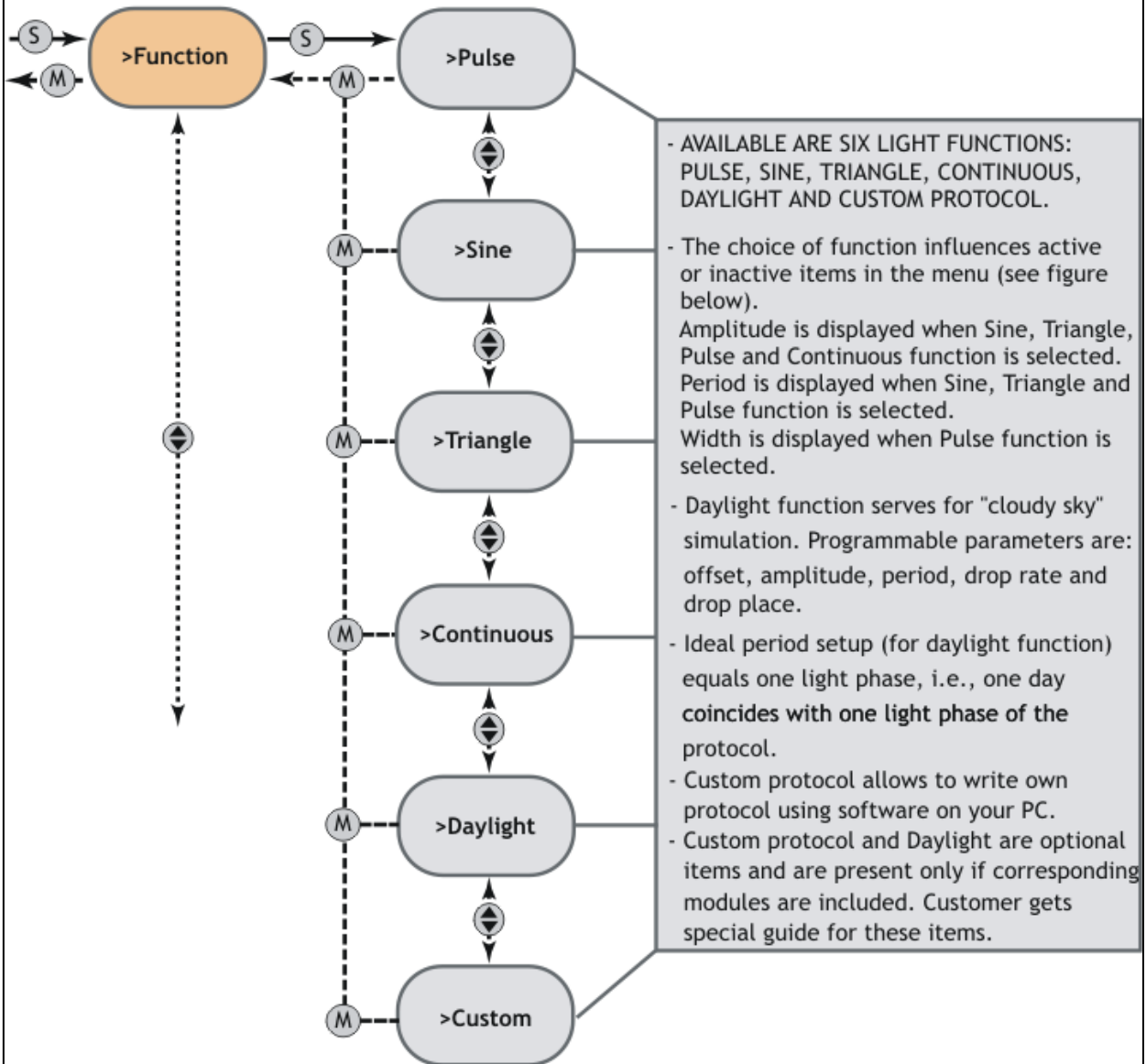
OTHER EDITABLE PROTOCOL FUNCTIONS:

Repeat forever = The whole protocol runs in infinite loop.

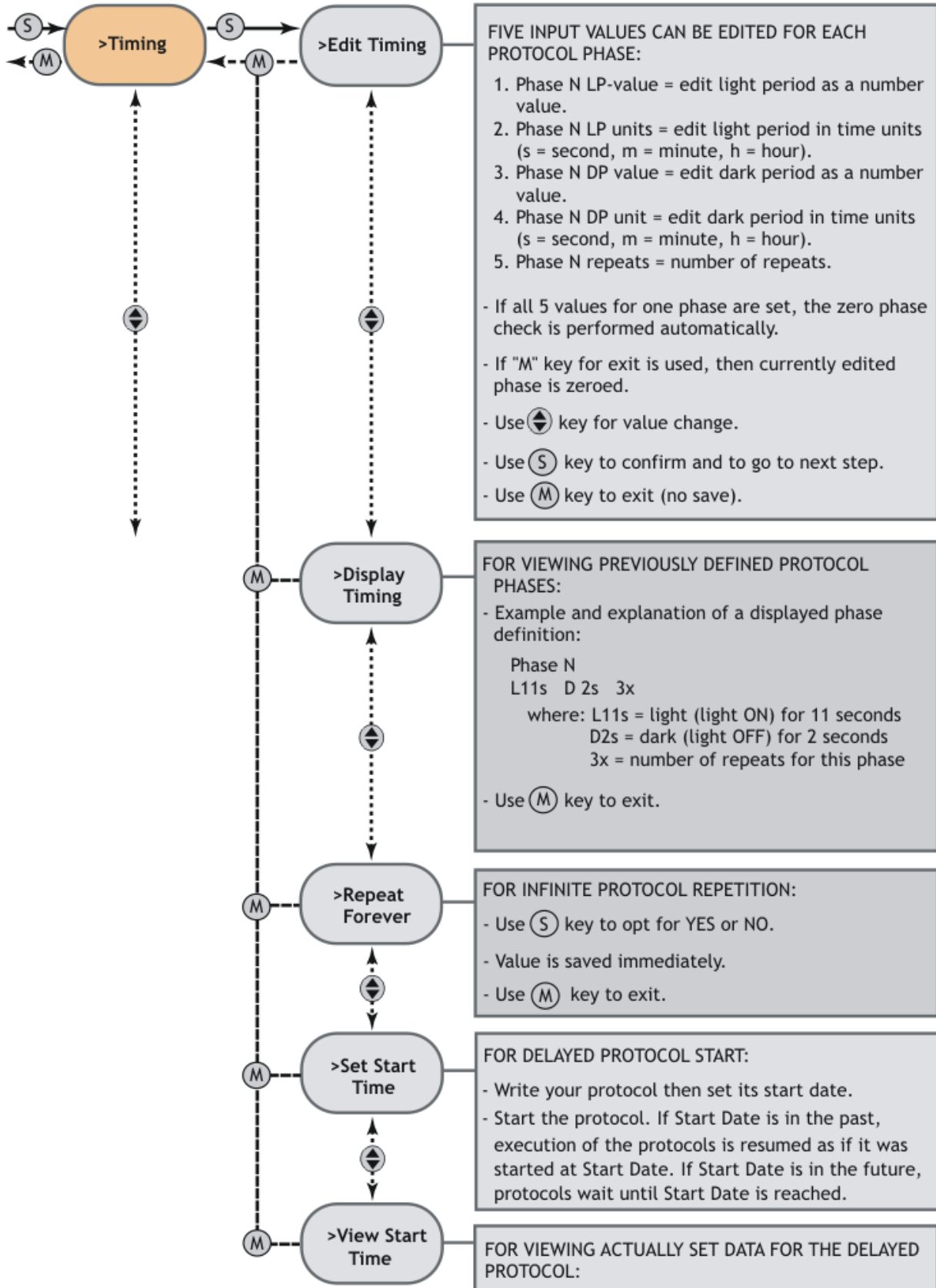
Zero phase = LP + DP = 0; or Repeats = 0. Editing of phases is finished when the Zero phase is confirmed.



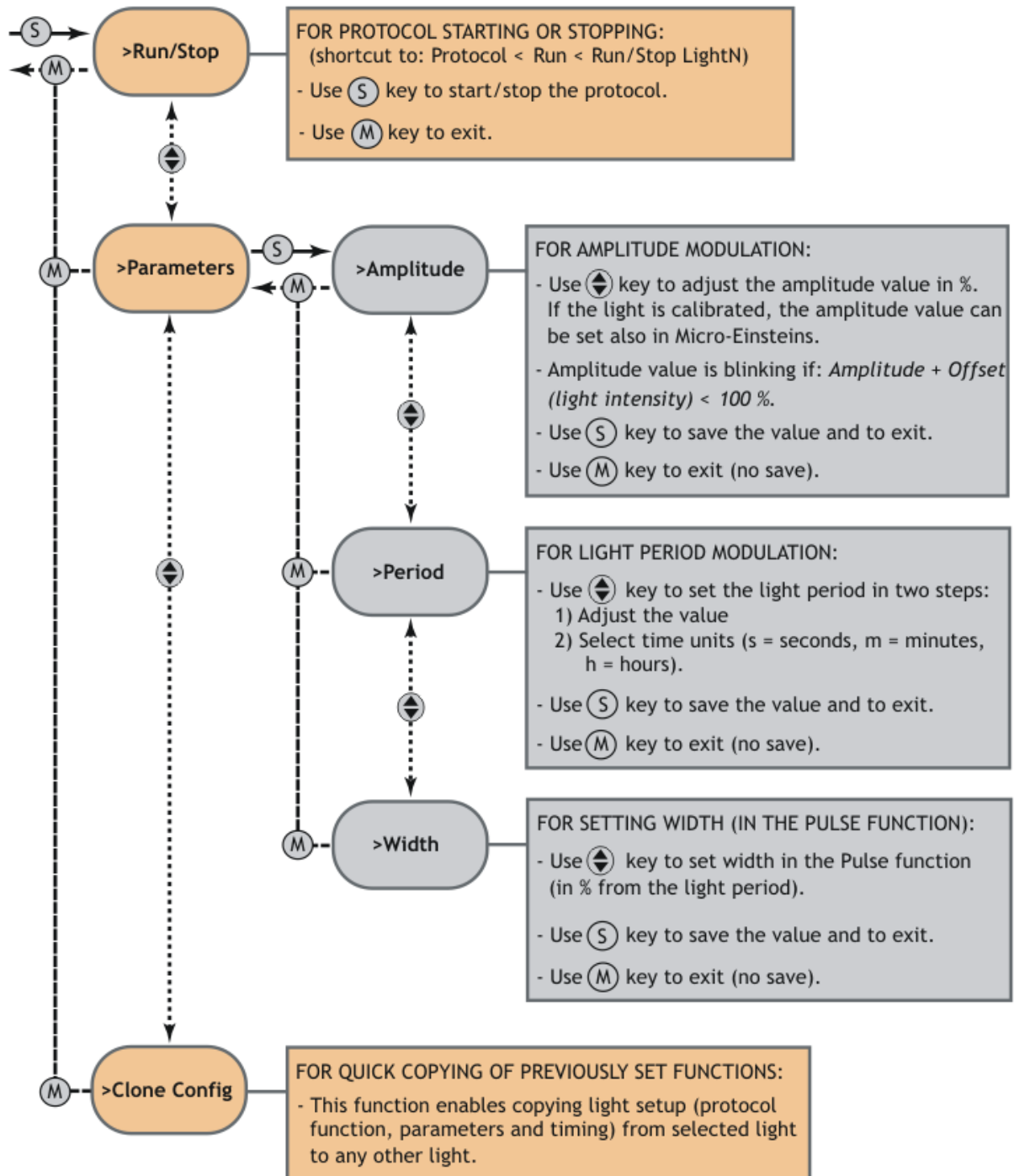
Menu Protocols - Edit - LightN - Function



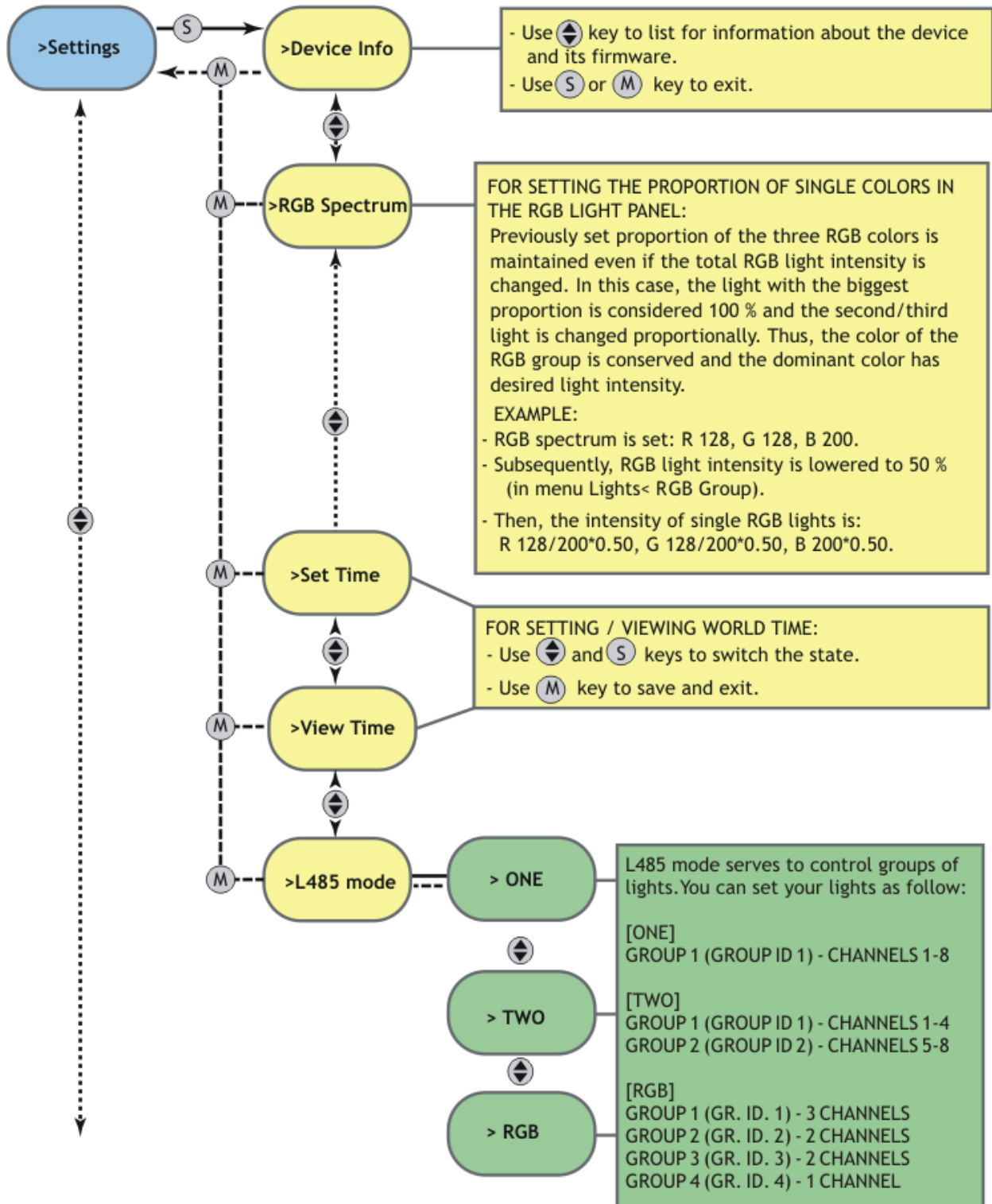
Menu Protocols - Edit - LightN - Timing



Menu Protocols - Edit - LightN - Run/Stop...Clone Config



Menu Settings Device info...L485 mode



6. L485 mode

LC 200 device, version for 485 lights (FytoPanels), uses hard-wired GroupID/channel to Light number assignment. Therefore it is necessary to configure FytoPanels GroupIDs carefully before connecting them to LC 200.

Assignment tables for different 485 modes are following:

LC 200	FytoPanel	
Light Nr	GroupID	Channel
1	1	1
2	1	2
3	1	3
4	2	1
5	2	2
6	3	1
7	3	2
8	4	1

L485 Mode RGB

LC 200	FytoPanel	
Light Nr	GroupID	Channel
1	1	1
2	1	2
3	1	3
4	1	4
5	2	1
6	2	2
7	2	3
8	2	4

L485 Mode Two

LC 200	FytoPanel	
Light Nr	GroupID	Channel
1	1	1
2	1	2
3	1	3
4	1	4
5	1	5
6	1	6
7	1	7
8	1	8

L485 Mode One

LC 200 Lights 1-3 are designed for use with 3-Channel RGB FytoPanel, as LC 200 has RGB spectrum support on this 3 channels. Other Light positions do not have any special functions and can be assigned anyhow.

Example of RGB and WhiteIR panels setup:

Available panels are: 3x RGB, 2x WhiteIR and 10x White. RGB panels need to be controlled separately and by color, WhiteIR as well and White panels need to be controlled in two groups.

Steps to setup the FytoPanels:

1. Connect all the panels to PC
2. Scan bus to map device network
3. Change GroupID of all RGB (3 channel) devices to 1 by selecting corresponding devices in *TreeView*, changing GroupID to 1 and confirming by *Set* button
4. Change GroupID of all WhiteIR panels to 2
5. Change GroupID of 5 of the White panels to 3
6. Change GroupID of other 5 of the White panels to 4
7. Enable *DisplayGroups* check box and check if the Groups contain desired lights

When connected to the LC 200, FytoPanel channels will be mapped to Lights in following way:

LC 200	FytoPanels
Light Nr	
1	RGB - Red
2	RGB - Blue
3	RGB - Green
4	WhiteIR - White
5	WhiteIR - IR
6	White
7	N/A
8	White

7. Statement of Limited Warranty

- This Limited Warranty applies only to the Light Controller LC 200. It is valid one year from the date of shipment.
- If at any time within this warranty period the instrument does not function as warranted, return it and the manufacturer will repair or replace it at no charge. The customer is responsible for shipping and insurance charges (for the full product value) to PSI. The manufacturer is responsible for shipping and insurance on return of the instrument to the customer.
- No warranty will apply to any instrument that has been (i) modified, altered, or repaired by persons unauthorized by the manufacturer; (ii) subjected to misuse, negligence, or accident; (iii) connected, installed, adjusted, or used otherwise than in accordance with the instructions supplied by the manufacturer.
- The warranty is return-to-base only, and does not include on-site repair charges such as labor, travel, or other expenses associated with the repair or installation of replacement parts at the customer's site.
- The manufacturer repairs or replaces faulty instruments as quickly as possible; the maximum time is one month.
- The manufacturer will keep spare parts or their adequate substitutes for a period of at least five years.
- Returned instruments must be packaged sufficiently so as not to assume any transit damage. If damage is caused due to insufficient packaging, the instrument will be treated as an out-of-warranty repair and charged as such.
- PSI also offers out-of-warranty repairs. These are usually returned to the customer on a cash-on-delivery basis.
- *Wear & Tear Items* (such as sealing, tubing, padding, etc.) are excluded from this warranty. The term *Wear & Tear* denotes the damage that naturally and inevitably occurs as a result of normal use or aging even when an item is used competently and with care and proper maintenance.

For customer support, please write to: support@psi.cz